

### Slide Switch Setting

	IN Band	OUT Band
	R3 = 0R	R3 = N/A
CH1	2414 MHz	2490 MHz
CH2	2432 MHz	2510 MHz
CH3	2450 MHz	2390 MHz
CH4	2468 MHz	2370 MHz

### DIP Switch Setting

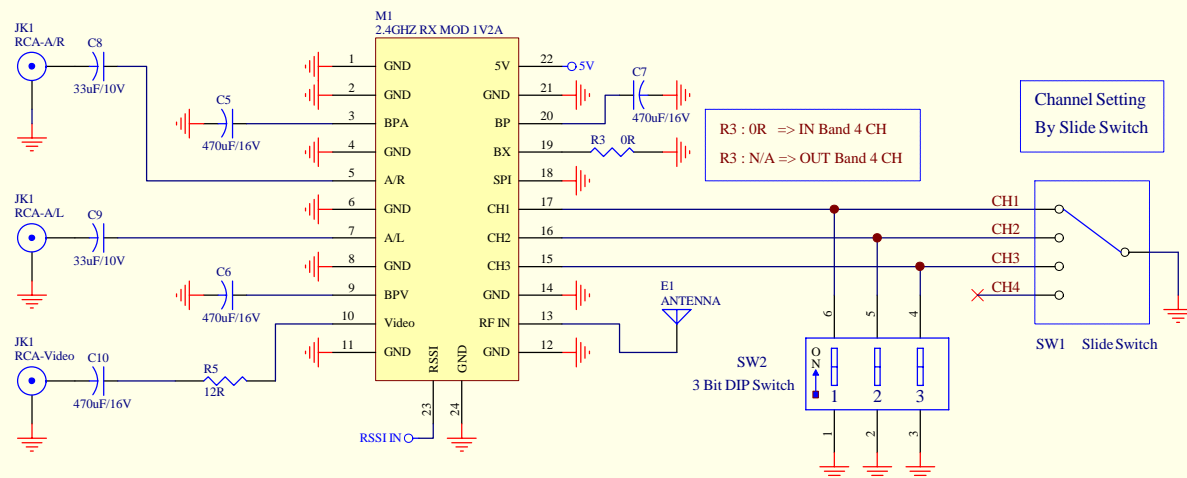
	CH BIT			IN Band	OUT Band
	1	2	3	R3 = 0R	R3 = N/A
CH1	0	1	1	2414 MHz	2490 MHz
CH2	1	0	1	2432 MHz	2510 MHz
CH3	1	1	0	2450 MHz	2390 MHz
CH4	1	1	1	2468 MHz	2370 MHz

"0" => Short to GND

"1" => Open

Title			2.4GHz TX Module Application CKT		
Size	Number		Revision		
A4					
Date:	Sheet		of		
File: www.mr-lee-catcam.de			Drawn By:		

1 2 3 4 5 6



R3 : 0R => IN Band 4 CH  
R3 : N/A => OUT Band 4 CH

Channel Setting  
By Slide Switch

### Slide Switch Setting

	IN Band	OUT Band
	R3 = 0R	R3 = N/A
CH1	2414 MHz	2490 MHz
CH2	2432 MHz	2510 MHz
CH3	2450 MHz	2390 MHz
CH4	2468 MHz	2370 MHz

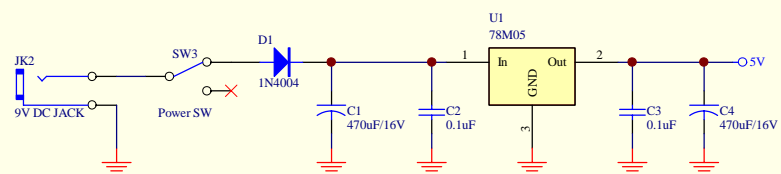
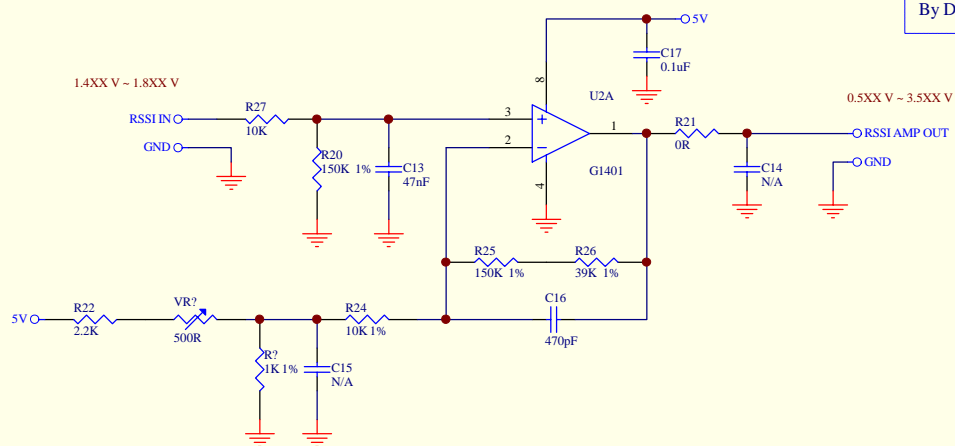
Channel Setting  
By DIP Switch

### DIP Switch Setting

	CH BIT			IN Band	OUT Band
	1	2	3	R3 = 0R	R3 = N/A
CH1	0	1	1	2414 MHz	2490 MHz
CH2	1	0	1	2432 MHz	2510 MHz
CH3	1	1	0	2450 MHz	2390 MHz
CH4	1	1	1	2468 MHz	2370 MHz

"0" => Short to GND

"1" => Open



Title  
2.4GHz RX Module Application CKT

Size	Number	Revision
B		
Date:	Sheet of	
File: www.mr-lee-catcam.de		

1 2 3 4 5 6